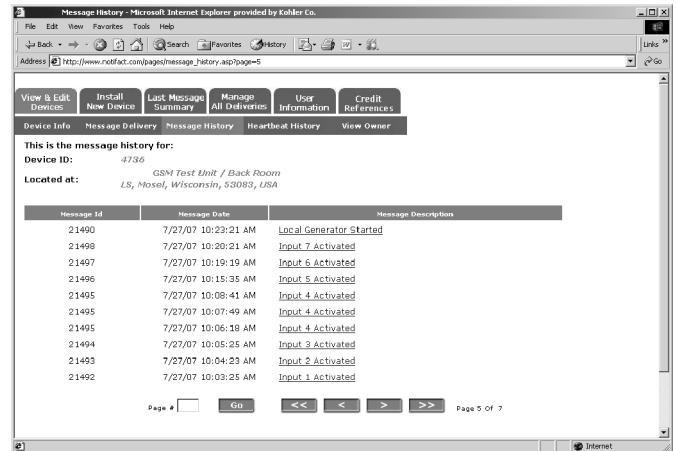


# Kohler PowerScan™ Monitor System

## KOHLER POWER SYSTEMS

### Wireless Monitor

**ISO 9001**  
KOHLER  
POWER SYSTEMS  
NATIONALLY REGISTERED



## System Features

- UL 2017 listed
- Provides system reliability via around-the-clock monitoring
- Uses wireless technology to send messages
- Sends messages instantly to selected recipients
- Allows customer selection of inputs, which can include overcrank, low oil pressure, high engine temperature, door open, and common fault alarms
- Allows the customer to select the delivery method to alert recipients: e-mail, phone (English or Spanish with multiple delivery attempts), fax, pager, or XML SMTP messaging
- Results in the dispatch of the best qualified technician
- Reduces unplanned outages
- Provides remote start/stop capability with feedback messages

## Hardware Features

- Easy installation and activation
- Dry contact and voltage inputs
- Type 4 lockable enclosure, approved for outdoor installation
- Weather-resistant antenna
- LED indicators to verify communication and operation
  - Yellow: indicates service ready, transmitting message, or no service
  - Green: indicates successful message transmission, waiting to transmit, or no service
  - Red: indicates active input (viewable above each input when panel is removed)
- LED display indicates signal strength of cellular transmission or service mode
- Service button to signal on-site response
- Alarm silence button
- DIP switches:
  - Enable/disable remote start/stop
  - Enable/disable audible alarm
  - NO/NC input selection
  - AC/DC power supply selection

## Communication Features

- Wireless monitor continuously scans inputs and receives data from the equipment controller
- Monitor communicates with the equipment controller via discrete inputs or via Modbus® connection
- Monitor sends alarms over the digital GSM (Global System for Mobile) network to the operations center server
- GSM network provides high quality, fast alarm delivery
- Operations center annunciates alarm messages via the customer-selected delivery method
- System manages multiple alarms as required

## Website Features

- Uses the power of the Internet to view activity
- Operations center manages equipment data for website access
- Messages are reported in text format with time and date stamps identifying target recipient
- Information contains the alarm condition, equipment make/model, and equipment location
- Monitors and records equipment operation on a password-protected website
- Monitor sends a heartbeat message every 24 hours with system information to confirm operation; device failure produces *Unit Failed to Report Heartbeat* alarm message
- Records equipment runtimes
- Monitors service button activation to verify on-site response
- Provides equipment start/stop feedback messages
- Displays generator set battery low alarm
- Daily fuel level and low fuel alarms available (requires customer-supplied sensor)

Modbus® is a registered trademark of Schneider Electric

## Models

Kit Number	Power Requirement	Description
GM57946-KP1	120 VAC or 12/24 VDC	Hardwire model for the Decision-Maker 3+ controller. Includes 7 hardwire inputs: 4 dry contact inputs and 3 voltage inputs.
GM57946-KP2	120 VAC or 12/24 VDC	Modbus® model for the Decision-Maker 550 controller. Also includes 8 hardwire inputs (4 dry contact and 4 voltage inputs). Kit includes Modbus communication cable.
GM57946-KP3	120 VAC or 12/24 VDC	Hardwire model for the Decision-Maker 550 controller. Includes 7 hardwire inputs: 4 dry contact inputs and 3 voltage inputs.

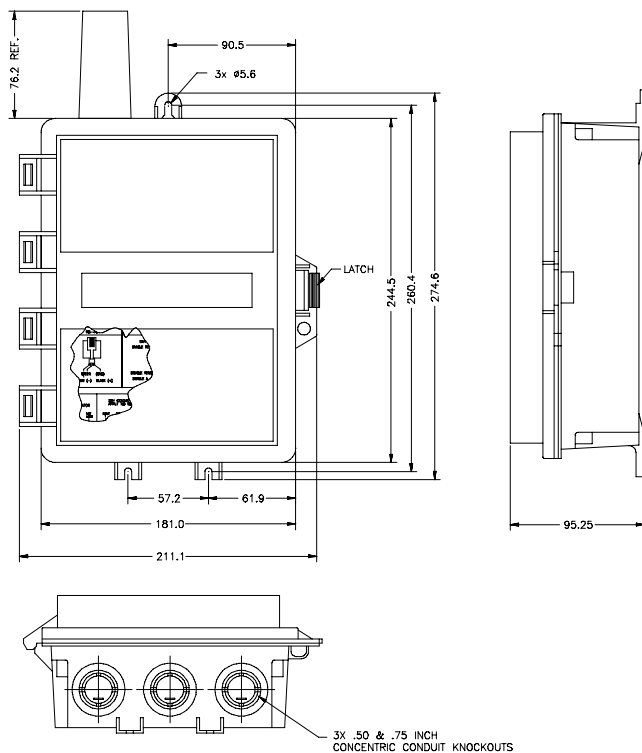
## Accessories

Remote antenna with mounting brackets and 3 m (10 ft.) cable available; contact your distributor/dealer for information.

## Cell Coverage

Before placing an order, check the coverage information on the Kohler Power Systems website at KohlerPower.com. Select Industrial>Solutions>Wireless Monitoring.

## Dimensions



## Specifications

- Power supply: 85–120 VAC @ 60 Hz or 12/24 VDC
- Power consumption: 15 VA
- Operating temperature range: -40° to 60°C (-40° to 140°F)
- Storage temperature range: -40° to 70°C (-40° to 160°F)
- Humidity range: 5%–95% noncondensing
- Voltage input rating: 24–120 VAC or 5–48 VDC
- Enclosure:
  - Type 4 enclosure approved for outdoor installation
  - Surface mountable
  - UV resistant ABS gray
  - Knockouts: 3 bottom, 3 rear (1/2 in., 3/4 in. concentric)

## Installation and Startup

For easy installation and startup:

- Record the transmitter device ID number from the device label.
- Access the website (KohlerPower.com) to open an account and set up message delivery.
- Check the signal strength before mounting.
- Mount the enclosure.
- Connect the outputs from the monitored equipment. Refer to the equipment manufacturer's instructions for connection diagrams.
- Connect the unit to a 12 VDC, 24 VDC, or 120 VAC/60 Hz power source. (Provide a step-down transformer for sources greater than 120 VAC.)
- Connect the battery pack (AC models only).
- Refer to TP-6541, Operation Manual, and TT-1472, Installation Instructions, for detailed operation information including device configuration instructions.

**DISTRIBUTED BY:**

Availability is subject to change without notice. Kohler Co. reserves the right to change the design or specifications without notice and without any obligation or liability whatsoever. Contact your local Kohler® generator set distributor for availability.